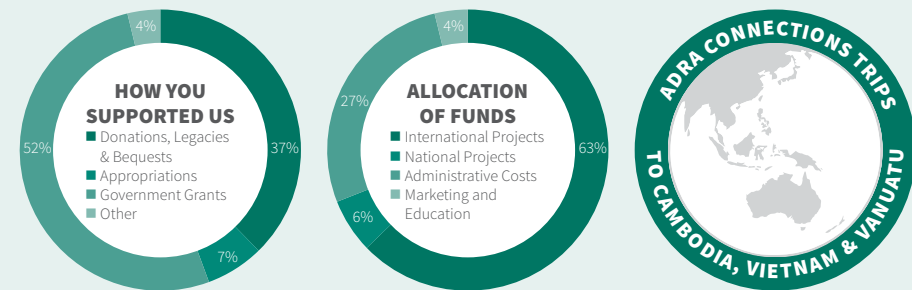


<div>JAN</div> <div> <div>1 FriNEW YEAR'S DAY</div> <div>2 Sat</div> <div>3 Sun</div> <div>4 MonNEW YEAR'S DAY HOLIDAY</div> <div>5 Tue</div> <div>6 Wed</div> <div>7 Thu</div> <div>8 Fri</div> <div>9 Sat</div> <div>10 Sun</div> <div>11 Mon</div> <div>12 Tue</div> <div>13 Wed</div> <div>14 Thu</div> <div>15 Fri</div> <div>16 Sat</div> <div>17 Sun</div> <div>18 Mon</div> <div>19 Tue</div> <div>20 Wed</div> <div>21 Thu</div> <div>22 Fri</div> <div>23 Sat</div> <div>24 Sun</div> <div>25 MonWELLINGTON ANNIVERSARY</div> <div>26 Tue</div> <div>27 Wed</div> <div>28 Thu</div> <div>29 Fri</div> <div>30 SatBLESSINGS GIFT TO ADRA www.adra.org.nz</div> <div>31 Sun</div> </div>	<div>FEB</div> <div> <div>1 MonAUCKLAND ANNIVERSARY NELSON ANNIVERSARY</div> <div>2 Tue</div> <div>3 Wed</div> <div>4 Thu</div> <div>5 Fri</div> <div>6 SatWAITANGI DAY</div> <div>7 Sun</div> <div>8 MonWAITANGI DAY HOLIDAY</div> <div>9 Tue</div> <div>10 Wed</div> <div>11 Thu</div> <div>12 Fri</div> <div>13 Sat</div> <div>14 Sun</div> <div>15 Mon</div> <div>16 Tue</div> <div>17 Wed</div> <div>18 Thu</div> <div>19 Fri</div> <div>20 Sat</div> <div>21 Sun</div> <div>22 Mon</div> <div>23 Tue</div> <div>24 Wed</div> <div>25 Thu</div> <div>26 Fri</div> <div>27 SatBLESSINGS GIFT TO ADRA www.adra.org.nz</div> <div>28 Sun</div> <div>29 Mon</div> </div>	<div>MAR</div> <div> <div>1 Tue</div> <div>2 Wed</div> <div>3 Thu</div> <div>4 Fri</div> <div>5 Sat</div> <div>6 Sun</div> <div>7 Mon</div> <div>8 TueINTERNATIONAL WOMEN'S DAY</div> <div>9 Wed</div> <div>10 Thu</div> <div>11 Fri</div> <div>12 Sat</div> <div>13 Sun</div> <div>14 MonTARANAKI ANNIVERSARY</div> <div>15 Tue</div> <div>16 Wed</div> <div>17 Thu</div> <div>18 Fri</div> <div>19 Sat</div> <div>20 Sun</div> <div>21 MonOTAGO ANNIVERSARY</div> <div>22 Tue</div> <div>23 Wed</div> <div>24 Thu</div> <div>25 FriGOOD FRIDAY</div> <div>26 Sat</div> <div>27 Sun</div> <div>28 MonEASTER MONDAY</div> <div>29 TueSOUTHLAND ANNIVERSARY</div> <div>30 Wed</div> <div>31 Thu</div> </div>	<div>APR</div> <div> <div>1 Fri</div> <div>2 Sat</div> <div>3 SunDAYLIGHT SAVINGS ENDS</div> <div>4 Mon</div> <div>5 Tue</div> <div>6 Wed</div> <div>7 Thu</div> <div>8 Fri</div> <div>9 Sat</div> <div>10 Sun</div> <div>11 Mon</div> <div>12 Tue</div> <div>13 Wed</div> <div>14 Thu</div> <div>15 Fri</div> <div>16 Sat</div> <div>17 Sun</div> <div>18 Mon</div> <div>19 Tue</div> <div>20 Wed</div> <div>21 Thu</div> <div>22 Fri</div> <div>23 Sat</div> <div>24 Sun</div> <div>25 MonANZAC DAY</div> <div>26 Tue</div> <div>27 Wed</div> <div>28 Thu</div> <div>29 Fri</div> <div>30 SatBLESSINGS GIFT TO ADRA www.adra.org.nz</div> </div>	<div>MAY</div> <div> <div>1 Sun</div> <div>2 Mon</div> <div>3 Tue</div> <div>4 Wed</div> <div>5 Thu</div> <div>6 Fri</div> <div>7 Sat</div> <div>8 SunMOTHER'S DAY</div> <div>9 Mon</div> <div>10 Tue</div> <div>11 Wed</div> <div>12 Thu</div> <div>13 Fri</div> <div>14 Sat</div> <div>15 Sun</div> <div>16 Mon</div> <div>17 Tue</div> <div>18 Wed</div> <div>19 Thu</div> <div>20 Fri</div> <div>21 Sat</div> <div>22 Sun</div> <div>23 Mon</div> <div>24 Tue</div> <div>25 Wed</div> <div>26 Thu</div> <div>27 Fri</div> <div>28 SatBLESSINGS GIFT TO ADRA www.adra.org.nz</div> <div>29 Sun</div> <div>30 Mon</div> <div>31 Tue</div> </div>	<div>JUN</div> <div> <div>1 Wed</div> <div>2 Thu</div> <div>3 Fri</div> <div>4 Sat</div> <div>5 SunWORLD ENVIRONMENT DAY</div> <div>6 MonQUEEN'S BIRTHDAY</div> <div>7 Tue</div> <div>8 Wed</div> <div>9 Thu</div> <div>10 Fri</div> <div>11 SatALL BLACKS v WALES EDEN PARK, AUCKLAND</div> <div>12 Sun</div> <div>13 Mon</div> <div>14 Tue</div> <div>15 Wed</div> <div>16 Thu</div> <div>17 Fri</div> <div>18 SatALL BLACKS v WALES WESTPAC STADIUM, WLG</div> <div>19 Sun</div> <div>20 Mon</div> <div>21 Tue</div> <div>22 Wed</div> <div>23 Thu</div> <div>24 Fri</div> <div>25 SatALL BLACKS v WALES FORSYTH BARRI STADIUM, DUNEDIN BLESSINGS GIFT TO ADRA www.adra.org.nz</div> <div>26 Sun</div> <div>27 Mon</div> <div>28 Tue</div> <div>29 Wed</div> <div>30 Thu</div> </div>	<div>JUL</div> <div> <div>1 Fri</div> <div>2 Sat</div> <div>3 Sun</div> <div>4 Mon</div> <div>5 Tue</div> <div>6 Wed</div> <div>7 Thu</div> <div>8 Fri</div> <div>9 Sat</div> <div>10 Sun</div> <div>11 Mon</div> <div>12 Tue</div> <div>13 Wed</div> <div>14 Thu</div> <div>15 Fri</div> <div>16 Sat</div> <div>17 Sun</div> <div>18 Mon</div> <div>19 Tue</div> <div>20 Wed</div> <div>21 Thu</div> <div>22 Fri</div> <div>23 Sat</div> <div>24 Sun</div> <div>25 Mon</div> <div>26 Tue</div> <div>27 Wed</div> <div>28 Thu</div> <div>29 Fri</div> <div>30 SatBLESSINGS GIFT TO ADRA www.adra.org.nz</div> <div>31 Sun</div> </div>	<div>AUG</div> <div> <div>1 Mon</div> <div>2 Tue</div> <div>3 Wed</div> <div>4 Thu</div> <div>5 Fri</div> <div>6 Sat</div> <div>7 Sun</div> <div>8 Mon</div> <div>9 Tue</div> <div>10 Wed</div> <div>11 Thu</div> <div>12 Fri</div> <div>13 Sat</div> <div>14 Sun</div> <div>15 Mon</div> <div>16 Tue</div> <div>17 Wed</div> <div>18 Thu</div> <div>19 FriWORLD HUMANITARIAN DAY</div> <div>20 SatALL BLACKS v AUSTRALIA SYDNEY STADIUM, SYDNEY, AUSTRALIA</div> <div>21 Sun</div> <div>22 Mon</div> <div>23 Tue</div> <div>24 Wed</div> <div>25 Thu</div> <div>26 Fri</div> <div>27 SatALL BLACKS v AUSTRALIA WESTPAC STADIUM, WLG BLESSINGS GIFT TO ADRA www.adra.org.nz</div> <div>28 Sun</div> <div>29 Mon</div> <div>30 Tue</div> <div>31 Wed</div> </div>	<div>SEP</div> <div> <div>1 Thu</div> <div>2 Fri</div> <div>3 Sat</div> <div>4 SunFATHER'S DAY</div> <div>5 Mon</div> <div>6 Tue</div> <div>7 Wed</div> <div>8 Thu</div> <div>9 Fri</div> <div>10 SatALL BLACKS v ARGENTINA WAIKATO STADIUM, HAMILTON</div> <div>11 Sun</div> <div>12 Mon</div> <div>13 Tue</div> <div>14 Wed</div> <div>15 Thu</div> <div>16 Fri</div> <div>17 SatALL BLACKS v SOUTH AFRICA AMI STADIUM, CHRISTCHURCH</div> <div>18 Sun</div> <div>19 Mon</div> <div>20 Tue</div> <div>21 Wed</div> <div>22 Thu</div> <div>23 Fri</div> <div>24 SatBLESSINGS GIFT TO ADRA www.adra.org.nz</div> <div>25 SunDAYLIGHT SAVINGS STARTS</div> <div>26 MonSOUTH CANTERBURY ANNIVERSARY</div> <div>27 Tue</div> <div>28 Wed</div> <div>29 Thu</div> <div>30 Fri</div> </div>	<div>OCT</div> <div> <div>1 SatALL BLACKS v ARGENTINA ARGENTINA</div> <div>2 Sun</div> <div>3 Mon</div> <div>4 Tue</div> <div>5 Wed</div> <div>6 Thu</div> <div>7 Fri</div> <div>8 SatALL BLACKS v SOUTH AFRICA SOUTH AFRICA</div> <div>9 Sun</div> <div>10 Mon</div> <div>11 Tue</div> <div>12 Wed</div> <div>13 Thu</div> <div>14 Fri</div> <div>15 Sat</div> <div>16 Sun</div> <div>17 Mon</div> <div>18 Tue</div> <div>19 Wed</div> <div>20 Thu</div> <div>21 FriHAWKE'S BAY ANNIVERSARY</div> <div>22 SatALL BLACKS v AUSTRALIA EDEN PARK, AUKLAND</div> <div>23 Sun</div> <div>24 MonLABOUR DAY</div> <div>25 Tue</div> <div>26 Wed</div> <div>27 Thu</div> <div>28 Fri</div> <div>29 Sat</div> <div>30 SunBLESSINGS GIFT TO ADRA www.adra.org.nz</div> <div>31 MonMARLBOROUGH ANNIVERSARY</div> </div>	<div>NOV</div> <div> <div>1 Tue</div> <div>2 Wed</div> <div>3 Thu</div> <div>4 Fri</div> <div>5 Sat</div> <div>6 Sun</div> <div>7 Mon</div> <div>8 Tue</div> <div>9 Wed</div> <div>10 Thu</div> <div>11 FriCANTERBURY ANNIVERSARY</div> <div>12 Sat</div> <div>13 Sun</div> <div>14 Mon</div> <div>15 Tue</div> <div>16 Wed</div> <div>17 Thu</div> <div>18 Fri</div> <div>19 SatWORLD TOILET DAY</div> <div>20 Sun</div> <div>21 Mon</div> <div>22 Tue</div> <div>23 Wed</div> <div>24 Thu</div> <div>25 Fri</div> <div>26 Sat</div> <div>27 Sun</div> <div>28 MonWESTLAND ANNIVERSARY CHATHAM IS. ANNIVERSARY</div> <div>29 Tue</div> <div>30 Wed</div> </div>	<div>DEC</div> <div> <div>1 Thu</div> <div>2 Fri</div> <div>3 Sat</div> <div>4 Sun</div> <div>5 Mon</div> <div>6 Tue</div> <div>7 Wed</div> <div>8 Thu</div> <div>9 Fri</div> <div>10 Sat</div> <div>11 Sun</div> <div>12 Mon</div> <div>13 Tue</div> <div>14 Wed</div> <div>15 Thu</div> <div>16 Fri</div> <div>17 Sat</div> <div>18 Sun</div> <div>19 Mon</div> <div>20 Tue</div> <div>21 Wed</div> <div>22 Thu</div> <div>23 Fri</div> <div>24 Sat</div> <div>25 SunCHRISTMAS DAY</div> <div>26 MonBOXING DAY</div> <div>27 TueCHRISTMAS DAY HOLIDAY</div> <div>28 Wed</div> <div>29 Thu</div> <div>30 Fri</div> <div>31 SatBLESSINGS GIFT TO ADRA www.adra.org.nz</div> </div>
--	---	---	--	--	--	--	--	--	---	--	--

THIS YEAR...

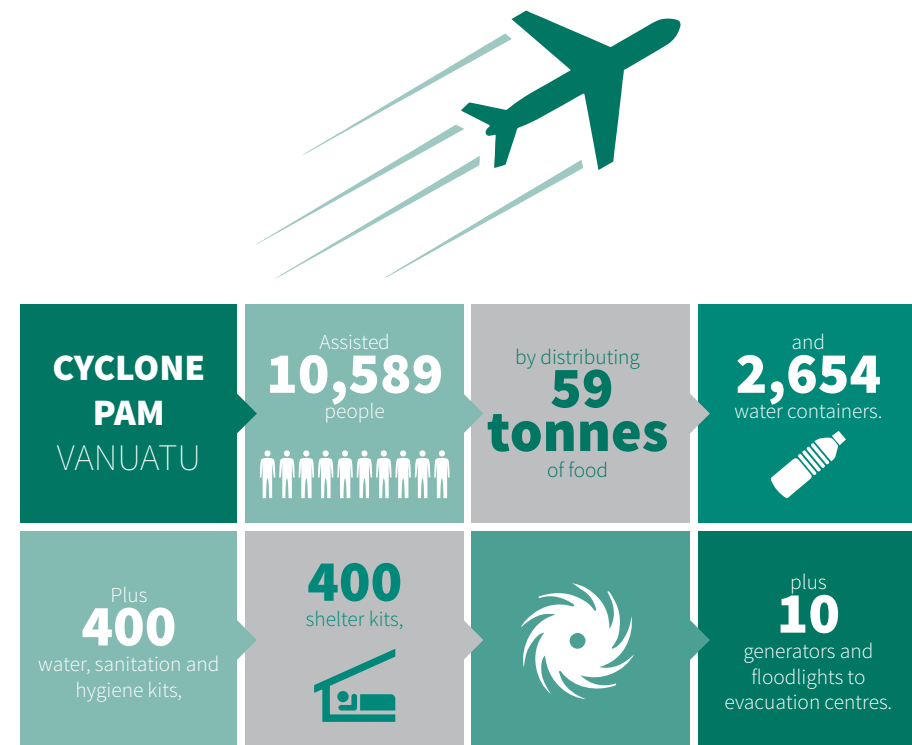


\$1,249,268 RAISED!



WHEN DISASTER STRUCK

WE RESPONDED WITHIN HOURS!

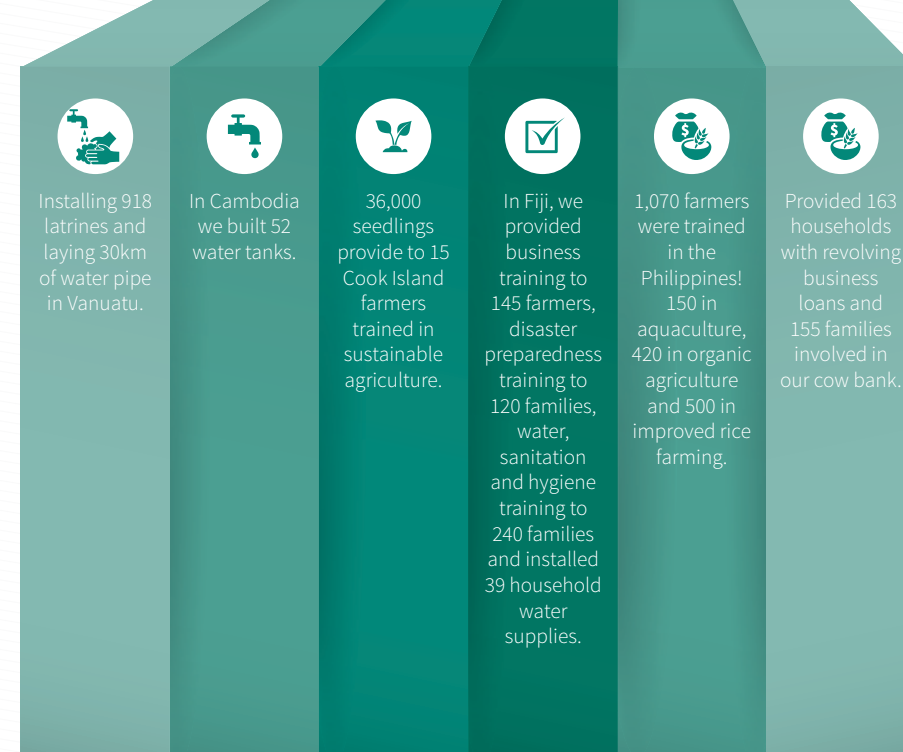


OVERSEAS

WE HELPED FAMILIES IN...



JUST SOME OF THE HELP WE GAVE INCLUDED:



FREE CALENDAR INSIDE

Stronger TOGETHER

2015 ANNUAL REPORT
Adventist Development and Relief Agency New Zealand



FROM THE C.E.O.

The last financial year has been an exciting journey for the team here at ADRA New Zealand.

Thanks to the growing support of our donors private income increased 31% on the last financial year and with confidence in our strategic direction we've welcomed new staff into our national, international and marketing departments. Plus, in the last financial year we've kicked off 14 new projects across New Zealand through the Church Partnership Programme.

This report is an attempt to give you a snapshot of the impact we've had. But I cannot emphasize this enough—we have not done it alone. It is only by working together—with supporters and donors, volunteers and international partners—that amazing things continue to happen.

Amongst all of this dynamic growth a few things remain consistent:

- We believe God created all people in his image to do amazing things. That's why I and the team are committed to what we do.
- We exist to help families thrive. Why? Because we believe families are the core unit that deliver real and lasting change in communities both here and overseas.
- We're focused on driving change through strong partnerships. Our work will only grow if we continue to work strategically with our international partners; engage more church groups to assist families in their communities through our national program; and, create stronger ties between our supporters and the impact of their support.

Looking back at the impact ADRA New Zealand has made over the past twelve months reminds me of one very important lesson—when people work together for good, amazing things happen.

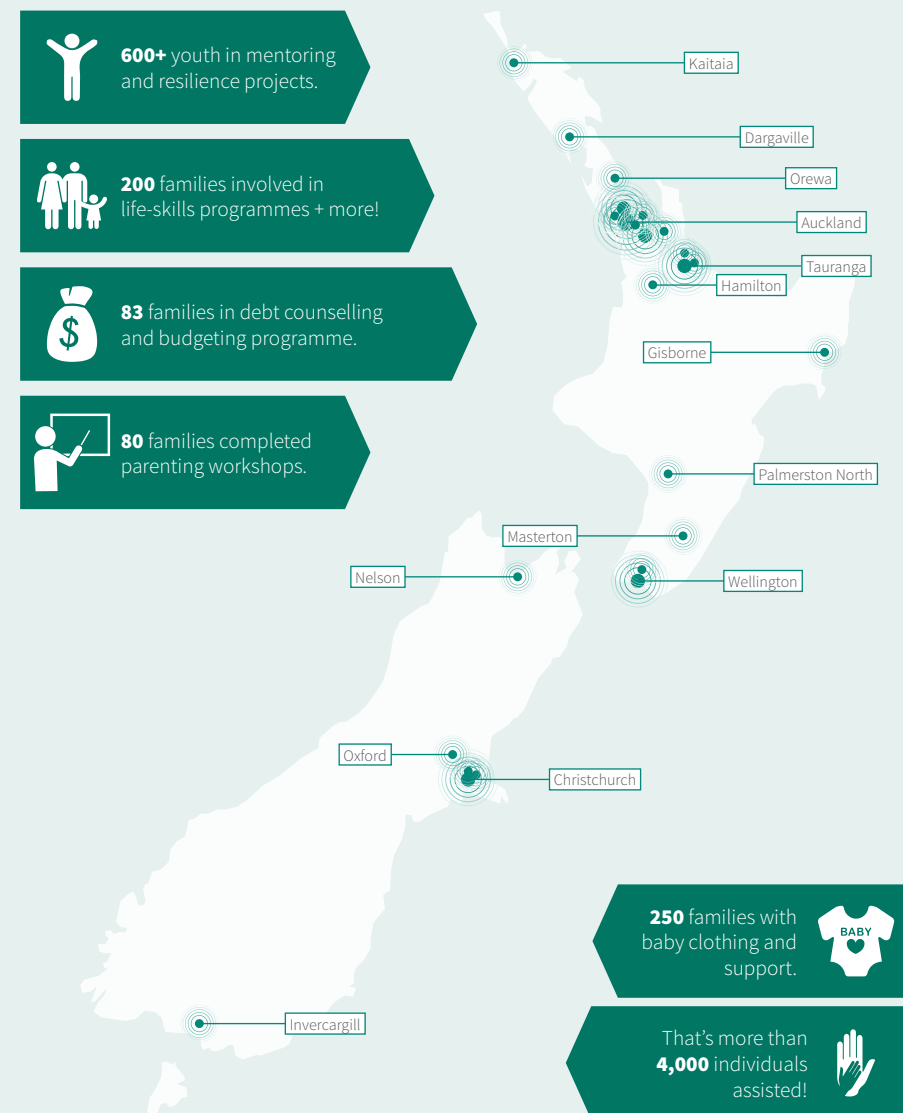
From the communities in which we work, to the collaborative way in which our team works we really are stronger, together.



MATT SILIGA
Chief Executive Officer

IN NEW ZEALAND,

35 church groups are running ADRA projects including Youth Mentoring, Baby clothing libraries, family budgeting courses, parenting workshops and more. All thanks to the support 450 volunteers.



Report of the Internal Auditor on the Summary Financial Statements

To the Board of Management
Adventist Development and Relief Agency
Auckland, New Zealand

The accompanying summary financial statements, which comprise the balance sheets as at 30 June 2015 and 2014 and the summary income statements for the years then ended, are derived from the audited financial statements of **Adventist Development and Relief Agency** ("the Organisation") for the years ended 30 June 2015 and 2014. We expressed qualified audit opinions on those financial statements in our reports dated 16 November 2015 and 25 November 2014.

The summary financial statements do not contain all the disclosures required by New Zealand Accounting Standards generally accepted by the Seventh-day Adventist denomination. Reading the summary financial statements, therefore, is not a substitute for reading the audited financial statements of the Organisation.

Responsibility of the Board of Management for the Summary Audited Financial Statements

The Board of Management is responsible for the preparation of a summary of the audited financial statements in accordance with New Zealand Accounting Standards generally accepted by the Seventh-day Adventist denomination.

Auditor's Responsibility

Our responsibility is to express an opinion on the summary financial statements based on our procedures, which were conducted in accordance with International Standard on Auditing (NZ) 810 "Engagements to Report on Summary Financial Statements."

Opinion

In our opinion, the summary financial statements derived from the audited financial statements of **Adventist Development and Relief Agency** for the years ended 30 June 2015 and 2014 are consistent, in all material respects, with those financial statements, on the bases described in Note 2. However, the summary financial statements are qualified to the equivalent extent as the audited financial statements of the Organisation for the years ended 30 June 2015 and 2014.

The qualification of the audited financial statements is described in our qualified audit opinions in our reports dated 16 November 2015 and 25 November 2014. Our qualified audit opinions are based on the fact that it is not practicable for the Organisation to maintain an effective system of internal control over the collection of donations and other fund raising activities until their initial entry into the accounting records of the Organisation.

Accordingly, our audit of donations and other fund raising activities and donations was limited to amounts recorded. Our qualified audit opinions state that, except for the possible effects of the matters described in the Basis for Qualified Opinion paragraphs, the financial statements present fairly, in all material respects, the financial position of the Organisation as at 30 June 2015 and 2014, and the results of its operations and its cash flows for the years then ended in conformity with New Zealand accounting standards generally accepted by the Seventh-day Adventist denomination.

General Conference Auditing Service
Brisbane, 16 November 2015



Trans Asia-Pacific Area
341 Broadwater Road
Mansfield QLD 4122
Tel +61 (0)2 98473250
Fax +61 (0)2 94890943
www.gcasconnect.org

INCOME STATEMENT

For the Year Ended 30 June 2015

	2015	2014
	\$	\$
Charity run	72,133	110,208
New Start garden	-	1,731
Investment income	736	601
Other income	131,344	183,219
Donations, legacies and bequests	1,249,268	948,142
Appropriations	235,035	252,177
Government grants	1,802,887	4,303,677
Total income	3,491,403	5,799,755
Administrative expenses	(846,335)	(710,507)
Marketing costs	(68,824)	(38,402)
International projects	(2,044,072)	(4,643,990)
National projects	(203,060)	(122,870)
Charity run costs	(54,786)	(43,495)
New Start garden costs	-	(47,157)
Finance costs	(30)	-
Other expenses	(36,268)	(57,948)
Total expense	(3,253,375)	(5,664,369)
Surplus before income tax	238,028	135,386
Income tax expense	-	-
Net surplus for the year	238,028	135,386
Other comprehensive income	-	-
Total comprehensive income for the year	238,028	135,386

BALANCE SHEET

As At 30 June 2015

	2015	2014
	\$	\$
ASSETS		
Current Assets		
Cash and cash equivalents	1,470,691	2,832,329
Trade and other receivables	258,016	105,328
Other current assets	13,690	121,605
Total current assets	1,742,397	3,059,262
Non-current assets		
Property, plant and equipment	107,394	91,597
Total non-current assets	107,394	91,597
TOTAL ASSETS	1,849,791	3,150,859
LIABILITIES		
Current Liabilities		
Trade and other payables	335,644	1,701,957
Short-term provisions	42,234	28,496
Other current liabilities	487,158	680,102
Total current liabilities	865,036	2,410,555
Non-current liabilities		
Long-term provisions	12,105	5,681
Total non-current liabilities	12,105	5,681
TOTAL LIABILITIES	877,141	2,416,236
NET ASSETS	972,651	734,623
EQUITY		
Reserves	337,659	249,989
Funds available for future use	634,992	484,634
TOTAL EQUITY	972,651	734,623

ADRA New Zealand is committed to adhering to the Council for International Development Code of Conduct. For queries regarding the code or to lodge a complaint please contact the Complaints Officer on 0800 499 911 or complaints@adra.org.nz